



➤ Arista E-Vocal Stage Interfaces

Arista Corporation's E-Vocal ARS-1616S-A00 and ARS-1616S-A10 Dante-equipped stage boxes are rugged units that can connect as many as 16 mics and other analog sources to a console via Dante over a single Ethernet cable. The ARS-1616S-A10 has onboard remote controlled preamps (with phantom power) while the ARS-1616S-A00 requires separate preamps. Both are bidirectional and can also convert a Dante stream to 16 analog outputs. For mission-critical operation requirements, dual AC input and dual PoE power sources are available for redundant operation. Shipping begins Q3, 2020. The ARS-1616S-A00 is \$1,399 (MSRP); the preamp-equipped ARS-1616S-A10 is \$1,999.

aristaproav.com

➤ Axiom AX1012 Constant Curvature Array

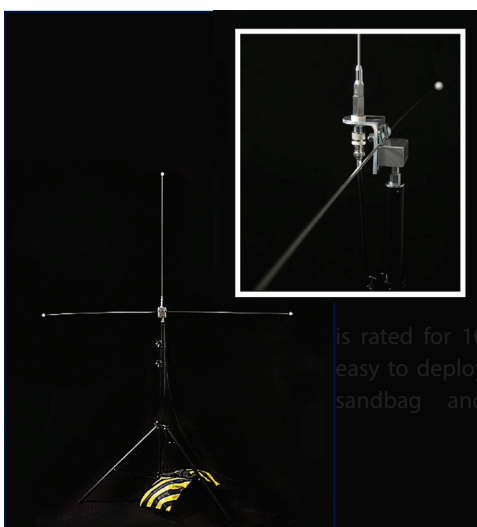
Axiom Pro Audio debuts its first constant-curvature array system, based on the full-range AX1012 enclosure. The powered 1,200W (900+300) two-way system with onboard DSP combines a 12" woofer with a 1.4" exit neodymium HF compression driver on a 100° x 20° (HxV) dispersion, constant-curvature Seamless Transition Waveguide (SWT). Capable of deployment as individual, point-source systems or in horizontal or vertical array configurations, AX1012 can meet the needs of a wide variety of applications, from small, portable FOH systems, to fills of all types, to permanent install systems for in-the-round venues like sports arenas.



axiomproaudio.com

➤ RF Venue FM Antenna Kit

Designed for broadcasting over low-power FM radio, RF Venue's FM Antenna Kit is a turnkey package for churches and live venues transitioning to "drive-in" style services and performances. The kit can dramatically improve signal quality for attendees listening to a live service or music performance in their cars by extending the antenna to the desired coverage area. Using an orthogonal ground plane with low SWR over the FM band, the antenna mW to 100W of continuous operation, is and includes a telescoping antenna stand, 100 feet of low-loss RG8X coaxial cable.



rfvenue.com

➤ Waves FIT Controller for the eMotion LV1 Live Mixer

Now available for pre-order, Waves' FIT controller for the eMotion LV1 Live Mixer begins shipping in Q3 2020 and retails at \$1,200. A fully-integrated control surface, FIT appeals to eMotion LV1 users who prefer tactile response of motorized 100mm faders (each with Mute/Solo/Select buttons), a multi-function rotary control and a bright display for each channel. There are eight dedicated layer switches and rotary channel controls can adjust preamp gain or pan, while the 16 Select Channel toggles can be set to "USER" mode to provide easy access to Mute Groups and user-assignable keys.



waves.com

➤ Avantone Pro Kick

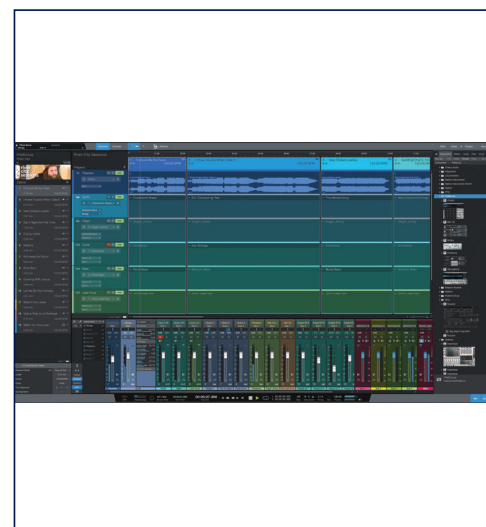
Avantone Pro's Kick is a sub-frequency dynamic kick drum mic that utilizes the company's famous reproduction "white cone" 6.5" diameter AV10-MLF its also markets as a direct replacement for NS-10 studio monitors. This single, continuous-press formed cone allows a much higher level of quality control and consistency during the manufacturing process. The Kick is built using a birch-ply drum shell, and mounting it on a standard mic stand just won't do, so the Avantone Pro Kick package includes a heavy-duty, stage-ready double-braced drum stand. Street price is \$349, including stand.



avantonepro.com

➤ PreSonus Studio One Professional V5.0

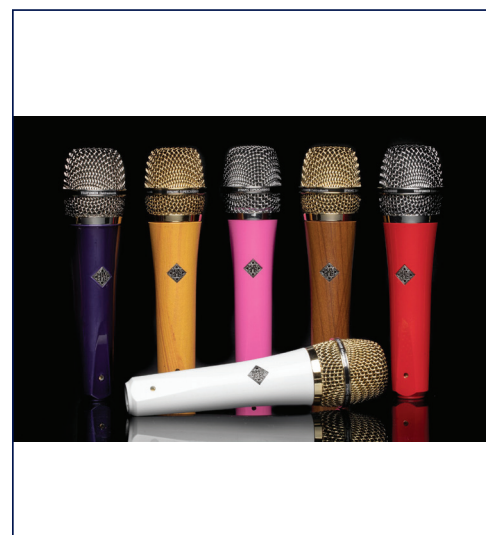
PreSonus' Version 5.0 of its acclaimed Studio One Professional (Mac/Win) recording software now includes a fully integrated, live performance environment capable of running complete shows from a single computer. The Show Page combines playback of backing tracks with patch management for virtual and real instrument players inside a single window. With a dedicated full-screen performance view, adaptive real-time controls and a large meter, running a show is simple and reliable, whether playing backing tracks, controlling virtual instruments, running plug-ins as a virtual effects rack, or all three at the same time. Street price is \$399.



presonus.com

➤ Telefunken Dynamic Mic Custom Shop Configurator

Telefunken now offers a Custom Shop Configurator for its dynamic microphone models. Hand assembled in the USA, M80 and M81 wired mics and wireless capsules can now be ordered in a wide array of body colors in solid, metallic or wood finishes with matching or contrasting headgrill colors and custom finishes. Each of these dynamic cardioid microphone models incorporate a low-mass voice coil, an extremely thin Mylar membrane and a quality output transformer to deliver wide frequency response, high-SPL handling and a condenser-like performance in a rugged design equally suitable for voice, instruments or drums.



telefunken-elektroakustik.com

➤ Whirlwind Custom Cyclone Cases

There's no limit to what Whirlwind can build. Its Cyclone Case line can make custom cases for any customer requirement, such as the case shown here that Whirlwind built for an audio rental house for the company's new AVID consoles. Features of Cyclone Cases include UL94, marine-grade UHMW polyethylene construction; proprietary box joint construction for maximum rigidity; custom marine-grade aluminum corner guards; MOL recessed latches; stainless hardware; UV-stable walls that are rated from -105° F to 167° F; and Colson Encore series 4x3-inch casters, each with a 480-pound capacity. All are hand-crafted in Rochester, NY.



whirlwindusa.com