

➤ A&H Third-Party Console Control Drivers

New drivers for Allen & Heath's Qu, SQ and dLive mixers allow control via Crestron, AMX and Extron platforms. Available online, these drivers offer control modules for all key mix parameters, and provide a starting point for building elegant custom user interfaces in corporate, leisure, education and other applications. Elements include levels and mutes for input/output channels, send/crosspoint levels, and scene/preset recall. The AMX driver is available on Allen & Heath's website. A Crestron driver for dLive and Qu mixers is on the Crestron Application Market; Extron dLive and Qu control drivers are downloadable from Extron's website.



allen-heath.com

InfoComm Booth #6353

➤ Audio-Technica ES954 Hanging Mic Array

The ES954 hanging mic array is a solution for capturing audio in conference rooms and other meeting spaces. Controlled by A-T's ATDM-0604 Digital Smart-Mixer, the 4-capsule array provides 360° coverage through virtual hypercardioid or cardioid outputs that can be steered horizontally and tilted vertically for differing ceiling heights or sitting/standing users. A permanently attached 4-foot cable with locking grommet enables easy mic height adjustment, and included is a plenum-rated AT8554 ceiling mount with RJ-45 connectors and push-type wire terminals for ease of installation, connecting to the mixer via two standard Cat-5 shielded cables.



audio-technica.com

InfoComm Booth #5968

➤ Avante Imperio Series

The Avante Imperio "mini" line array, designed for small-to-mid size installations and portable sound applications, includes three active speaker cabinets along with hardware for flying or ground-stacking the enclosures. The Imperio array module has two 4.75" neodymium woofers, six 1.75" inverted dome tweeters and a 240W RMS Class-D amplifier. The Imperio Sub is a powered (400W) 10" LF system and the Imperio SUB210 is a dual-10 (700W) enclosure. All three feature internal Class D amplification and can be used together in multiple combinations to build systems suitable for wide range of different purposes.



avanteaudio.com

InfoComm Booth #7357

➤ Countryman Halo Gooseneck Mic

Based on the popular A3 podium mic, the A3 Halo includes an ultra-bright LED indicator ring with tuned lightpipe and switchable omni, cardioid and hypercardioid polar patterns. Active Plus vibration cancellation reduces table thumps and handling noise without the need for shock mounting. An in-mic jumper lets installers reconfigure the A3 Halo's XLR5 to match most common halo gooseneck configurations without the need for rewiring. It also features a screw-on multistage windscreen, rigorous RF protection and a choice of three lengths in a rugged semi-rigid design.



countryman.com

InfoComm Booth #6049



➤ Ashly Audio mXa-1502 Mixer Amp

The next-generation mXa-1502 mixer amp brings four zones of mixing and DSP, plus 2 x 150W of power and programmable mic preamplifiers into a single rackspace. DSP functions can be controlled via any browser-enabled device via simple Ashly software. It also provides multi-zone music distribution, paging, sound-masking, automatic mixing and can process 12 audio inputs into four different areas of a church, restaurant, school, office, warehouse complex or other facility.

ashly.com

InfoComm Booth #6374

➤ Audix R303 Ribbon Microphone

The Audix R303 is the company's first ribbon mic design. The microphone is designed for studio use, yet the R303's tough, milled metal body is rugged enough for live and touring applications. Due to its roadworthy embossed ribbon element, the mic handles 134 dB max SPLs (thanks to its 1.8 mV/Pa sensitivity rating) and boasts a wide, smooth 40 Hz to 16 kHz frequency response. The R303 is made in the U.S., at the company's factory in Portland, OR. The microphone's street price is slated to be \$499.

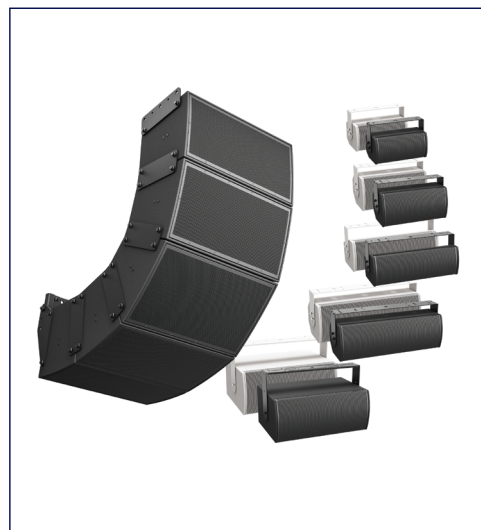


audixusa.com

InfoComm Booth #5775

➤ Bose Pro Shipping ArenaMatch Outdoor Speakers

Bose is now shipping its IP55 weather-rated ArenaMatch arrays, which incorporate DeltaQ technology to vary directivity ("Q") in each module to match coverage to audience area. Field-swappable waveguides include 10/20/40° vertical and 60/80/100° horizontal coverage. Each module has a 14" woofer and six HF comp drivers. Built for zone-fill or high-SPL foreground music, ArenaMatch Utility speakers are adaptable to a variety of configurations. All have M12 threaded inserts, bi-amp capability, passive X-overs and 70/100V inputs.

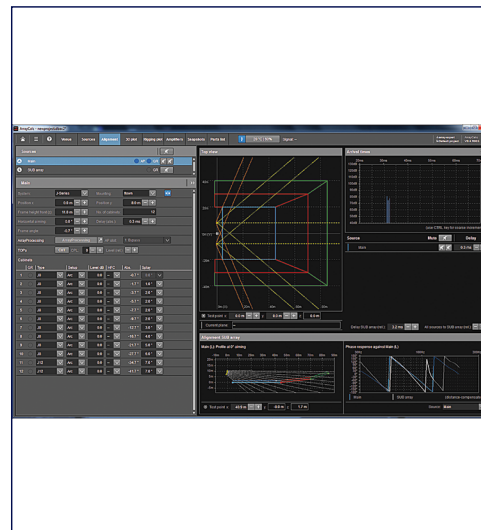


pro.bose.com

InfoComm Room W231 BC

➤ d&b audiotechnik ArrayCalc Exchange

d&b audiotechnik launches d&b ArrayCalc Exchange, a SketchUp extension that lets users convert CAD and EASE files into an ArrayCalc venue file (*.dbacv) that can be imported directly into ArrayCalc. Selected elements are divided into triangles or quadrangles and converted into corresponding triangular or quadrangular planes that are used in ArrayCalc. d&b ArrayCalc software is a comprehensive toolbox for all tasks associated with acoustic design, performance prediction, alignment, rigging and safety parameters. ArrayCalc Exchange is a free download from the d&b audiotechnik website.

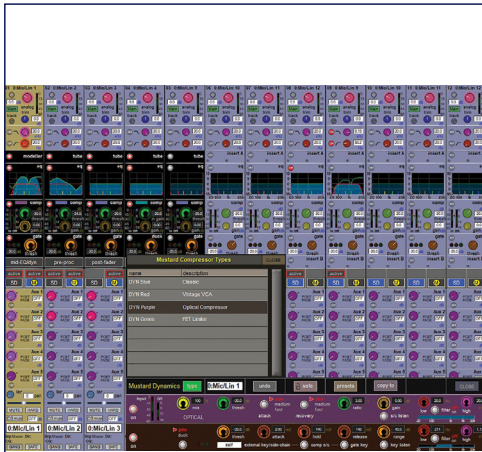


dbaudio.com

InfoComm Booth #6761

➤ DiGiCo Mustard For Quantum 7

A new set of FPGA-based channel strip processing algorithms for DiGiCo's Quantum 7 processing engine, the Mustard channel can be used in conjunction with standard SD processing to add preamp, filters, EQ, gate and a selection of compressor types to any channel strip. Options include a Mustard Tube preamp modeler and Mustard Dynamics, with vintage VCA and optical compressor types emulating well-known devices. Also new are Spice Rack processors (insertable on any channel), with the first addition being a 6-band compressor for detailed control of envelope shaping for definable frequency bands.



digico.biz

InfoComm Booth #6081

➤ HK Audio LINEAR 7 Speakers

Distributed by Yorkville Sound, HK Audio's Elements Linear 7 series consists of three sizes of two-way, full range cabinets, with 10/12/15" woofers, each paired with a 1" HF compression driver on a rotatable constant directivity horn. Onboard 2,000-watt powering is standard, as is Ethernet-control of integrated, low-latency 96 kHz DSP and support of the new Milan digital network standard. All include Ethercon ports and analog balanced I/O. A companion powered 18" subwoofer can easily pair with similar subs to provide directional cardioid bass setups.

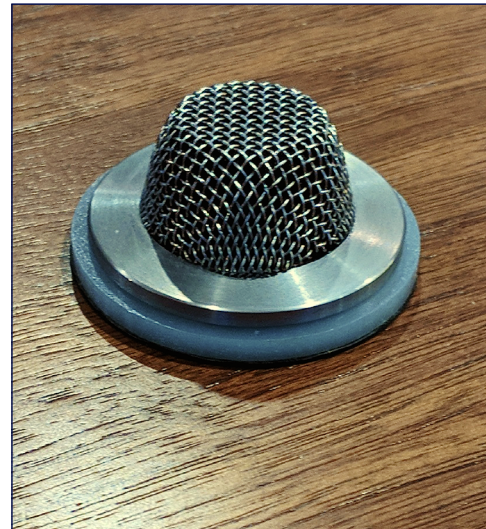


hkaudio.com

InfoComm Booth #5875

➤ Earthworks IMDL1 Directional Boundary Mic

Now shipping, Earthworks IMDL1 cardioid boundary mics offer high speech intelligibility and an unobtrusive appearance for table installations. The IMDL1 comes in a black or stainless steel finish and features the LumiComm Touch Ring — a dual-color LED light ring and a touch sensor output that allows integrators to easily assign function and LED color with a media control system. The mic features a 20 Hz to 30k Hz frequency response optimized for speech for clarity at all frequencies. Max SPL handling is 145 dB — enough for the most spirited boardroom discussions.



earthworksaudio.com

InfoComm Booth #5881

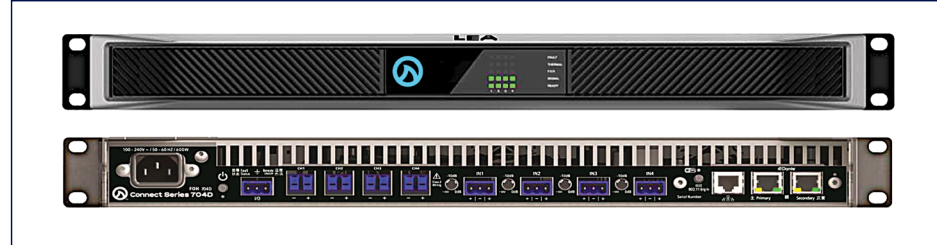
➤ LD Systems U504.7 IEM System

Designed for pro users, LD Systems' U500 in-ear monitoring systems offer ease of use and a selection of 96 channels, along with 2, 10 or 30 mW RF output power; a 100+ meter transmission range; infrared transmitter/receiver synchronization; up to 10 custom presets and high-contrast OLED displays that allow for individual user name assignments. Other standard features include: stereo/mono operation; 3-band EQ; three selectable squelch levels; a switchable limiter; and up to 10 hours of bodypack operation from two AA batteries. Twelve systems can operate simultaneously in five UHF ranges from 470 to 865 MHz.



ld-systems.com

InfoComm Booth #6581



➤ LEA Professional Dante Connect Series Amps

The first IoT/Cloud-enabled amplifiers in the pro AV world, the Connect Series from LEA Professional offers 2-/4-channel models designed for installations. All feature DSP, wired or Wi-Fi connectivity, webpage configuration/control, combined with high-performance sonics, ease of use and rugged reliability. The 4-channel flagship Dante 704D Connect shown here packs 700W/ch (at 4 ohms) and offers: low-impedance and 70/100V taps; analog and Dante inputs; onboard Analog Devices 96k Hz DSP; 4x4 input matrix; Mac, iOS, PC and Android support; crossovers, PEQ, delay and limiting — all in a 1U, 20-pound chassis. A six-year warranty is standard.

leaprofessional.com

InfoComm Booth #5889



➤ Lectrosonics M2C Active Antenna Combiner

Lectrosonics M2C is an ideal match for its DCHT portable stereo unit and Duet M2T dual stereo digital transmitters. Up to eight 470 to 614 MHz transmitter sources can feed a single antenna to minimize cabling in multi-channel systems. The M2C inputs are well isolated to minimize crosstalk and IM (intermodulation) between RF channels. The rugged 1U device has eight 50 Ohm BNC inputs and a single 50 Ohm BNC output port. MSRP is \$4,335 and the unit is available now.

lectrosonics.com

InfoComm Booth #6043



➤ Linea Research 20kW 8-Channel Amps

Linea Research adds 8-channel 20kW models to its M and C series of networked DSP amplifiers. Optimized to deliver 2,500W/channel into 4 ohms with all eight channels driven simultaneously, all versions offer networked control, 96kHz DSP and user FIR filters on every output, along with analog and AES inputs as standard and a Dante/AES67 option. With four inputs, eight outs, and full front panel control, the 48M20 is aimed at portable and touring users, while the 8-in/8-out installation-targeted 88C20 provides the same DSP and control but with a tamperproof blank front panel.

linea-research.com

InfoComm Booth #7066

➤ Link LKG Gigabit System

The LKG Gigabit series of armored, locking connectors are ideal for applications requiring multiple Cat-6A + power connections. Available with configurations of one, two, four- and six- Cat-6A connections and power from single-phase 20A to three phase 30A, LKG is ideal for front of house and cross stage connections that require hybrid power + data. Shown here is the LKG 24/2E10, with two Gigabit contacts, three size 12 pins (suitable for AC power-ing), a size 16 pin and six size 18 pins for DMX or analog/digital audio signals. Various custom configurations are also offered.



linkusa-inc.com

InfoComm Booth #5543

NEWGEAR/INFOCOMM PREVIEW

➤ Luminex LumiNode

A new concept in Ethernet-to-DMX converters, LumiNode is available in four versions. LumiNode 1 (no drivers needed — just connect to use) has two processing engines, one DMX output and a USB port that functions as an Ethernet dongle. With four processors and two DMX ports, LumiNode 2 is ideal to use on any fly-bar in a fixed infrastructure or for wall mounting. The half-rack (or truss-mount via an M10 insert/safety ear) LumiNode 4 has six processors and four DMX ports. The rack-mount LumiNode 12 has 16 processors and 12 DMX ports.



luminex.be

InfoComm Booth #7469

➤ Meyer Ships ULTRA-X40

Now shipping, the (22.3" x 12.5" x 14" HxWxD) ULTRA-X40 features a high power-to-weight/size ratio and dual 8" neodymium LF drivers paired with a 3" diaphragm HF compression driver on a rotatable 110° x 50° Constant-Q horn. Onboard 3-channel 1,950W Class-D amps provide a 55-pound weight — some 20 pounds less than the UPA-1P. Specs include a 60 Hz to 18 kHz frequency response with 130.5 dB peak SPLs. Mounting options include 11 M8 fly points, a 35mm pole cup, M20 threaded insert socket and versatile rigging options. Also offered is the ULTRA-X42, with a narrower 60° x 50° horn.



meyersound.com

InfoComm Booth #5761

➤ Peavey Marine-Grade CS Series Speakers

Peavey Elements marine-grade CS Series can withstand the ravages of salt water. Ideal for cruise ships, swimming pools, coastal theme parks, resorts, restaurants and more. All metal components are 316 stainless steel for pitting/corrosion resistance, and the permeable hydrophobic membrane between speaker and stainless grill is upgraded. All support 70V, 100V and 8 ohm inputs and are offered in black or UV-protected white. Models with 12" or 15" woofers pair with a 2" HF driver on a rotatable 60°x40° or 105°x60° horn. An 8" model and a flyable, dual-12" weatherproof sub are also offered.

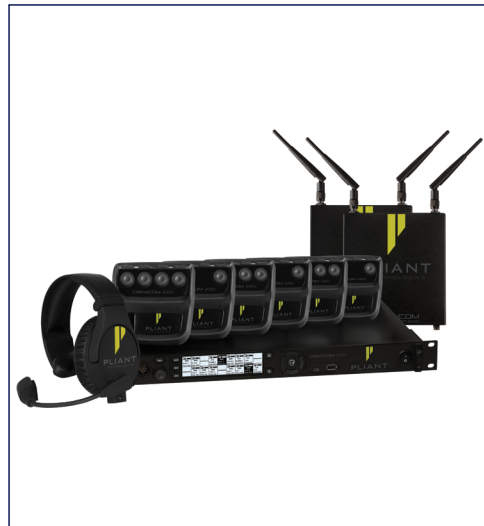


peaveycommercialaudio.com

InfoComm Booth #6775

➤ Pliant Upgrades CrewCom

Pliant Technologies unveiled upgrades for its CrewCom wireless intercom system. In addition to a firmware tweak, these include an enhanced SmartBoom LITE Headset with a noise-canceling mic and an improved speaker with wider bandwidth. A new drop-in charger lets six Radio Packs plus six additional batteries charge in the same device for more effective battery management. The CrewCom Fiber Hub expands system capabilities, allowing up to eight fiber connections using standard SFP-based connectivity supplied with single mode fiber ports along with a single RJ-45 copper port to interface to existing CrewNet connections.

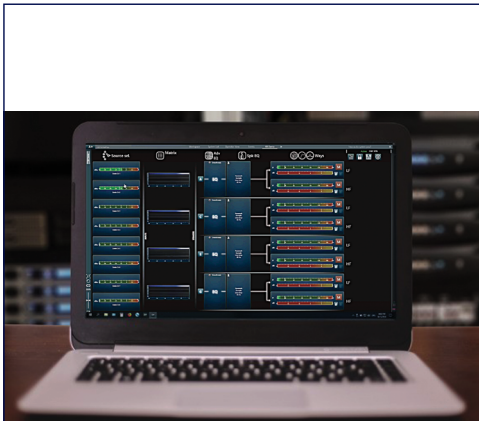


plianttechnologies.com

InfoComm Booth #5447

➤ Powersoft Updates ArmoniaPlus

Powersoft's new ArmoniaPlus v1.1.1, software for remote control and monitoring of the full range of Powersoft products is free and available for download. ArmoniaPlus places the user at the center of the stage, offering the ability to constantly monitor the headroom. Every operation now takes place on the loudspeakers; linking can be done in multiple ways and auditioning various presets can now be done on the fly. Existing users should note that projects done on Armonia can easily be imported into the new ArmoniaPlus software.



armonia.powersoft.it

InfoComm Booth #6681

➤ Professional Wireless Systems PRZM

Professional Wireless Systems debuts PRZM, a high performance RF-over-fiber (RToF) conversion system designed to facilitate the remote placement of wireless audio antennas beyond 200 feet, for purer signals with no degradation of quality. The system is controlled via software, which allows the user to easily (and remotely) monitor status and adjust attenuation and the PZRM R1 receiver and PZRM T1 transmitter are each housed in a road-tough chassis with fiber optic I/O ports and standard BNC antenna connections



professionalwireless.com

InfoComm Booth #6161

➤ QSC AD-6S Speakers

Part of its AcousticDesign Series, QSC's AD-6S are transformerless, surface-mount 6.5-inch two-way loudspeakers designed for foreground and background music applications, as well as installations requiring higher SPL foreground sound reinforcement. The speakers are essentially identical to QSC's AD-6T, but removing the transformer reduced costs while providing a 16-ohm nominal impedance, making them ideal for use in low-impedance distributed systems. Available in black or white, they also include the X-Mount mounting system for ease of installation.



qsc.com

InfoComm Booth #3811

➤ Radial Engineering DiNET Dante Interfaces

Radial Engineering is shipping its DiNET 2-channel Dante to/from analog audio network interfaces. The DAN-TX2 transmitter (shown here, front and back) and DAN-RX2 receiver connect to any Dante or AES67-compliant network, offering 24-bit/96k Hz digital converters for exceptional audio quality. The RX2 also has a headphone tap for convenient monitoring. Both devices feature locking EtherCON jacks and can be powered via Power over Ethernet (PoE) or an included 15V adaptor, and both power sources can be used simultaneously for redundancy. A rack mounting kit is optional.



radialeng.com

InfoComm Booth #6368

NEWGEAR/INFOCOMM PREVIEW

➤ Radio Active Designs Wireless Intercom

The new Gen 2 UV-1G wireless intercom system operates on VHF band, freeing up UHF spectra for wireless mic and IEM systems. A Base Linking function affords matrix-like functionality, with up to 18 inputs/24 outputs and comprehensive audio routing to/from belt packs, which operate for up to eight hours of battery life. A Scene Change feature allows each pack to have up to 40 talk paths, to create a community with 20 wired comm channels. The system is spectrally efficient for seamless roaming at up to 600 meters. An intuitive user interface on the packs lets users easily change all parameters of the pack via software.



radioactiverf.com

InfoComm Booth #6161

➤ Riedel Artist-1024 Intercom Node

The Artist-1024 features 1,024 ports in a 2 RU chassis and native IP support with full SMPTE ST 2110-30/31 (AES67) compliance. Software-defined Universal Interface Cards (UIC) combine networking, mixing and management, and can be configured as an AES67 or MADI subscriber card, or as an Artist fiber / router / processor card. The Artist-1024 frame accepts up to 10 UICs. Two are reserved solely for routing and networking; the remaining eight can be equipped with UICs for various subscriber needs. A mixer on each card can scale from 8 to 128 ports and can access all 1,024 ports of the Artist backbone



riedel.net

InfoComm Booth #6261

➤ Shure TwinPlex Microphones

Designed to stand up to tough conditions, the TwinPlex line of premium sub-miniature (5 mm) omnidirectional lavalier and headset mics offer natural, ultra low-noise audio at both high and low frequencies from its patent-pending capsule technology in an easy-to-conceal package. The series has four lavaliers (TL45, TL46, TL47, TL48) and an ultra-light adjustable headset mic (TH53) in multiple colors. Available in 1.1mm and 1.6mm versions, the paintable cables are immune to kinks and memory effects, resulting in excellent flex performance due to an innovative spiral construction with redundant shielding.

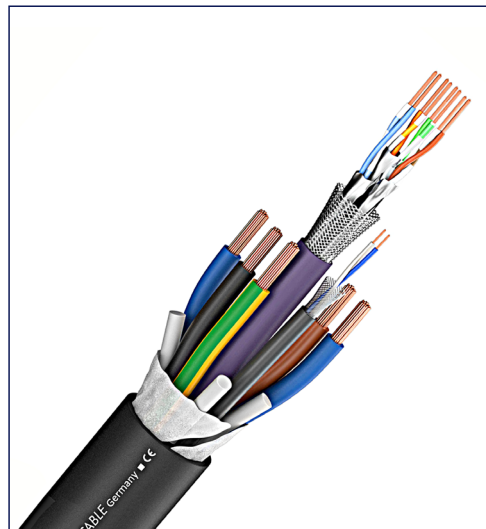


shure.com

InfoComm Booth #5845

➤ Sommer Cable SC-Monocat 121C Cable

This new hybrid cable is the big brother of the Monocat 111C. In addition to the Cat-7 Ethernet conductors and a shielded pair for DMX/digital audio (110-ohm AES/EBU) transmission, the new cable has four color-coded wires for power, plus a common ground wire. This allows connecting two independent lines for power via two conductors for hot, two conductors for neutral and one ground wire. The insulation and 0.68" (17.3mm) diameter black outer jacketing is flame-retardant PVC. Power conductors are 13 AWG; the AES/EBU or DMX line is 26 AWG; and all are OFC oxygen-free copper.



sommercable.com

InfoComm Booth #5450

➤ Waves Audio Submarine Plug-in

Submarine is a 2-octave subharmonic generator plug-in that adds bigger, deeper sub bass to any channel or bus. Two sub generators process your source — kick, bass, even full mixes — and add new frequencies — up to a two octaves below the precise frequency range you've selected. A Range slider lets users zero in on the exact frequencies (20 to 240 Hz) they want to generate sub sounds from. Other controls include Drive Saturation, Dynamics (transients) tweaking, Mono/Stereo select and Wet/Dry parallel mixing. It's SoundGrid compatible and operates with zero latency.

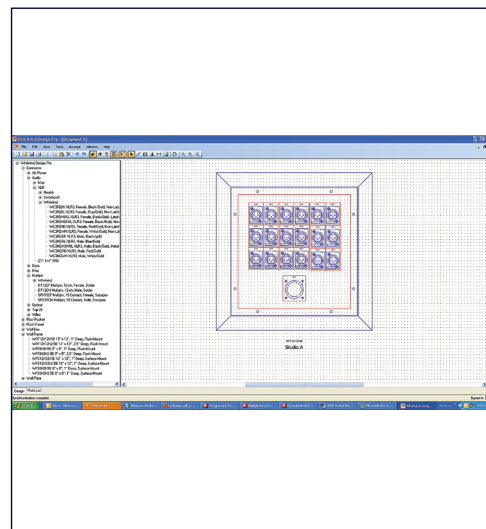


waves.com

InfoComm Booth #6091

➤ Whirlwind DesignPRO 2.0 Software

DesignPRO is Whirlwind's new, free downloadable software by StarDRAW, which allows users to custom design their own distro, panels, plates or boxes and submit them directly to Whirlwind for quotation. Included in DesignPRO 2.0 is an Improved AutoCAD export functionality and features include a new Powerlink Power Distro environment that lets users design their own custom Powerlink Distro. The free download of DesignPRO 2.0 can be accessed from the Whirlwind website at whirlwindusa.com/design-pro.



whirlwindusa.com

InfoComm Booth #6661



➤ XTA MX36 Console Switching System

A solution to managing multiple redundant connections from multiple sources while maintaining signal integrity, the MX36 has three sets of four inputs, that accept analog, AES (with SRC) and Dante formats. Each set has automatic failover and switching to the four outputs via big, bold controls. Outputs are routed to analog, AES and Dante simultaneously. Stereo line and mono mic inputs handle music and announcements. Redundant power supplies and external AES output sync are optional. Any input/output can be monitored individually, and units may be cascaded or paralleled to increase set switching capacity, or channels per set.

xta.co.uk

InfoComm Booth: #6081

➤ Yorkville Synergy

The Synergy Array Series of active point-source speakers consists of the SA153 full-range cabinet, along with the SA315S powered sub. Fed by a coaxial MF/HF driver and 2,600 watts, the SA153's Tom Danley-designed Paraline Lens provides a continuous horn throat from cabinet to cabinet on the horizontal plane to eliminate comb filtering usually associated with traditionally arrayed cabinets. The SA315S sub has three 15" woofers and 6,500W of onboard power. Systems can be ground stacked or flown and used horizontally or vertically, depending on venue needs, with 22.5° x 45° (asymmetrical 10° up, 35° down) dispersion.



yorkville.com

InfoComm Booth #5875