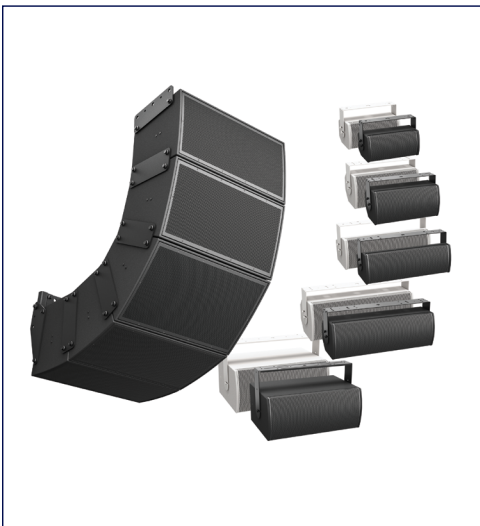


NEWGEAR

➤ Bose Pro ArenaMatch Outdoor Speakers

With an IP55 weather rating for outdoor use, ArenaMatch arrays incorporate DeltaQ technology to vary directivity ("Q") in each module to match coverage to audience area. Designers can select modules with 10/20/40-degree vertical coverage and swap between 60/80/100-degree horizontal waveguides — even in assembled arrays — to adjust horizontal coverage or create asymmetrical patterns. Each module has a 14" woofer and six compression drivers. Built for zone-fill or high-SPL foreground music, ArenaMatch Utility speakers offer a similar tonal balance but in compact designs. Adaptable to a variety of configurations, all have M12 threaded inserts, bi-amp capability, passive X-over and 70/100V inputs.



pro.bose.com

➤ Carvin Amps and Audio SCx Speakers

Designed for small to mid-sized venues, the SCx Series consists of active 12" and 15" two-way speakers and an 18-inch powered sub. Onboard 1,000W powering and Analog Devices ADAU1701 Sigma DSP are all standard. The SCx12A is \$499; the SCx15A is \$649 and the SCx18A sub is \$799. The full-range speakers have a 2-input mixer and a slanted enclosure design for use as FOH mains or stage monitors. All are equipped with 1.5-inch (38mm) pole mount cups and six fly points. Construction is premium poplar with weatherproof DuraTec finish, and they accommodate voltages from 115 to 230 VAC, 50/60 Hz.



carvinaudio.com

➤ dBTechnologies RS16000 Touring Rack

This true diversity, 24-bit digital, wireless UHF (470 to 870 MHz) mic system is housed in a rugged road case. It includes six RS16000R receivers, broadband antenna, antenna splitter and network hub that facilitates using dB Technologies' proprietary Wireless Manager software via a front-panel USB port. An Ethernet port is provided for building and managing multiple systems, each supporting more than 60 transmitters simultaneously. Handheld and bodypack transmitters are sold separately. Interchangeable capsules are included with the handheld transmitter along with a Shure adapter; the bodypack has a Shure-compatible mini-XLR connector. Windproof active omni and directional antennas are optional.



dbtechnologies.com

PL+S Hall 8.0 Booth H80

➤ eAcoustics Raptor Subwoofer

The USA-built Raptor is a double-18 subwoofer in a tour-grade multi-ply birch hardwood enclosure, with two premium B&C neodymium long-excursion woofers delivering lows down to 32 Hz. It's available in non-powered and 160-pound powered versions, with the latter featuring 2,400 Watts of Powersoft amplification to each driver for 140 dB max SPL peaks. The powered Raptor 728A model also has onboard Armonia DSP with parametric EQ, delay, gain and muting via USB; for simpler setups, four LPF settings (65/75/85/95 Hz) are provided. Other features include waterproof cones, a moisture/UV resistant Poly-Tec finish, recessed handles and a powder-coated perforated steel grill.



eAcoustics.com

➤ EAW KF810P Installation Line Array

The latest model in Eastern Acoustic Works' (EAW) KF800 series, the KF810P, is a 3-way system offering high output and true broadband pattern control. Designed for installations, it features black or white finishes, invisible wiring and concealed three-point rigging. A weather-rated option is available. Inside are two 10-inch woofers; four 5-inch cone mids; and two 1.4"-exit HF drivers. Max SPL is rated at 145 dB. Integrated Concentric Summation Array (CSA) technology offers 80° or 100° horizontal; 10° vertical pattern control down to 250 Hz to handle challenging acoustic spaces.



eaw.com

PL+S Hall 8.0 Booth J80

➤ EM Acoustics Halo-B

Designed for small-to-medium tours and venues, the Halo-B is the third system in the Halo line array family, sitting between Halo-A and Halo-C in both physical size (weighs under 64 pounds) and overall system output. This two-way, line array features dual 8" woofers and four 1" HF ring radiator compression drivers. It is built on the same "maximum headroom" design principles as the flagship Halo-A, to ensure consistency across all SPL levels and consistent horizontal dispersion. Specs include: 65Hz to 20kHz (± 3 dB) frequency response; 110° horizontal dispersion; and a max peak SPL of 141 dB.



emacoustics.co.uk

➤ L-Acoustics X4i Coaxial Enclosure

L-Acoustics has launched X4i, a powerful, compact and weatherized (IP55 rated) coaxial loudspeaker for install applications. Weighing less than a kilo, the X4i is only 3.9" deep and intended for fill applications in performing arts centers or houses of worship, matching the sonic signature of main L-Acoustics systems such as ARCS and Kiva. X4i can be hidden in walls, stair risers, stage lips, pit rails, under balconies or any other tight spots, or as vocal reinforcement in conference rooms, museums, exhibits, etc. Combined with Syva Sub, X4i is also an ideal solution in indoor/outdoor background music applications.

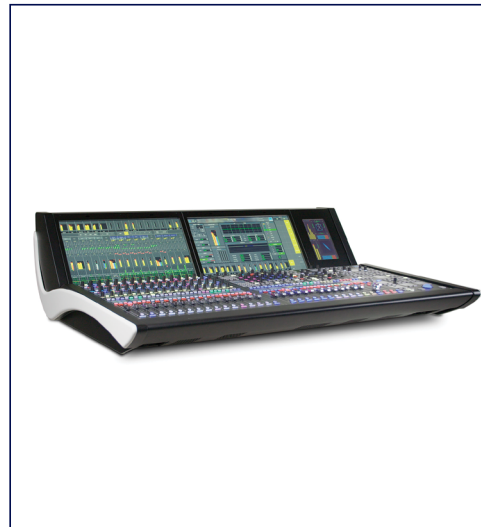


l-acoustics.com

PL+S Hall 8.0 Booth H85

➤ Lawo mc²56 with Dual-Fader Bay

A new option for its mc²56 console is a dual-fader operating surface that can host up to 144 faders within the footprint of a much smaller console, while retaining Lawo's LiveView thumbnail previews of associated video streams directly in the fader strips. Each of the console's fader bays can either be equipped with the new dual-fader module or the standard fader module. The mc²56 features native support for SMPTE 2110, AES67/RAVENNA, Dante and MADI audio streams. Also standard is Lawo's IP-Share Network Gain Compensation, which prevents unexpected gain changes during simultaneous use of up to eight networked consoles.



lawo.com

PL+S Hall 8.0 Booth C28; NAB Booth N2503

NEWGEAR

➤ Martin Audio SXC118 Cardioid Subwoofer

Designed for touring sound and installations, the SXC118 is a compact, high performance cardioid subwoofer. It features an 18" forward-facing driver and 14" rear-facing driver, each driven independently by separate channels and DSP from an iK42 amplifier. Each driver has its own chamber with optimized bass reflex porting. The result is a cardioid dispersion. It can be used individually, stacked or flown via threaded flying inserts. A threaded top surface plate facilitates pole-mounting of up to four WPM enclosures or a single point-source enclosure. With the weather kit accessory, the product can also be installed outdoors.



martin-audio.com

PL+S Hall 8.0 Booth H50

➤ On-Stage UTC5500 Utility Cart

On-Stage debuts its new UTC5500 Utility Cart, an update on the company's popular UTC2200, with a slightly bigger frame and larger, all-terrain wheels. The swiveling 8" front wheels lock in any position and feature a heavy-duty tread. The rear wheels offer the same treading and measure in at 10". These durable wheels will easily plow through any conditions, helping roadies and audio techs haul equipment and/or backline with ease. The cart measures 30 x 13.6 x 11.2" and expands to 52 x 13.6 x 37" to accommodate more gear. The cart hauls up to 550 pounds and folds for easy storage.



on-stage.com



➤ Outline V10/V15 Kits

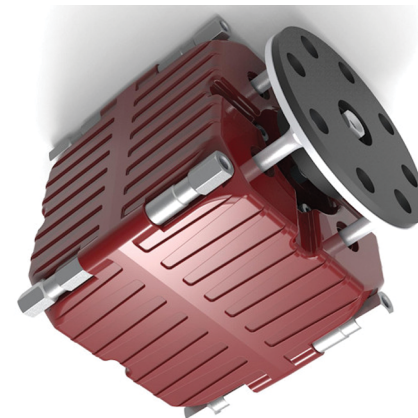
Designed to offer premium quality, wood-cabinet products at MI pricing are Outline's V10 and V15 kits. Comprising one or two powered subwoofers that also contain the amplification and processing for the satellite speakers from Outline's well-established Vegas range, these portable setups deliver up to 12,000 watts of power, with ease of setup. The V15 includes two Vegas15 speakers and two Sub118-SP12 powered subs, along with Speakon cabling and two wheelboards for the subs. The 4,500-watt V10 has two Vegas10 speakers, a single Sub118-SP23, all required cabling and a wheelboard for the subwoofer.

outline.it

PL+S Hall 8.0 Booth G60

➤ Powersoft Mover

Powersoft's Mover is a small yet incredibly powerful linear transducer for both audio applications or as a linear motor/shaker. Available in low-impedance and 1000-Volt versions, Mover is based on the company's patented moving magnet linear motor technology. Adaptable to various purposes, including 4-D cinemas, theme parks or venues with vibrating acoustic floors — as well as applications beyond entertainment — Mover uses haptic perception so audiences can feel the sound by vibrating the surrounding environment, which the human body picks up through bone conduction and translates into perceivable frequencies, down to 5 Hz.



powersoft-audio.com

PL+S Hall 8.0 Booth G40

➤ RCF RDNet V3.1 Control Software

Version 3.1 of RCF's RDNet control software includes direct control of the onboard high-pass filter, along with GUI enhancements for faster adjustments and intuitive control for touch screen devices. A new Shape Designer assists with line array set-up, performing a two-dimensional calculation to provide system curvature, system rigging point, and cabinet angles. A Bass Shaper tool helps the system engineer adjust the desired timbre on low frequencies to correct low-end behavior to maintain tonal balance across the entire system. RDNet 3.1 also takes control on the internal high-pass filter on each cabinet, improving system flexibility.



rcf.it

PL+S Hall 8.0 Booth H80

➤ Voice-Acoustic Paveosub-115

Paveosub-115/115sp is said to be the world's smallest 15" subwoofer. With its 59.4-pound, 14.2 x 21.3 x 22.5" (HxWxD) dimensions, it's ideal for fixed installs where a discreet appearance is required and the speakers are integrated into the architecture. It can be used flat or upright, with rubber feet and M20 flanges provided on two sides. The tri-amped powered version can feed a second slave subwoofer with 2,400 W and stereo tops with two 800 W feeds, along with delay, IIR/FIR filters and a selection of inputs such as Dante, AES/EBU, AES67 and analog signals. An unpowered version (1,000 W AES handling) is also available.



voice-acoustic.de

PL+S Hall 8.0 Booth E76

➤ Whirlwind Cyclone Pocket Door Cases

Cyclone-Series Pocket Cases are Whirlwind's answer to those clumsy doors that you typically have to store when not in use. Simply tuck these away into the case and they're gone. Available in 10/12/14/16-space (or custom sizes), the inner shell is shock-mounted top and bottom for extra protection. Specs include: UL94, marine-grade UHMW polyethylene construction; Colson Encore series 480-pound capacity (each) casters; 5052-H32 marine-grade aluminum corner guards; MOL recessed latches, stainless hardware; custom inlays on four sides for customer logo and/or inventory ID; and truck-pack outer dimensions, ideal for 90-100" trailer widths. Handcrafted in Rochester, NY.

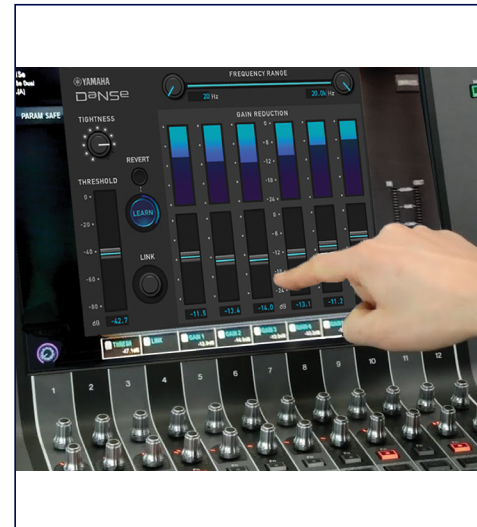


whirlwindusa.com

NAB Booth C9732

➤ Yamaha Rivage PM Firmware V3.0

V3 firmware for Rivage PM mixers offers more flexible operations and faster control as well as a new "DaNSe" plug-in that achieves noise suppression without complex setup or user programming. Ideal with speech and lavalier mics (especially in theater), DaNSe can reduce air conditioning rumble and noise produced by cooling fans from onstage moving lights, for example. The ability to route MIX bus and MATRIX signals back to input channels improves routing, for creating parallel compression and multi-layer mixes using stems. Other perks include a cascade connection, making higher input capacities available for large-scale applications.



yamahaproaudio.com

PL+S Hall 8.0 Booth F50; NAB Booth C1725